

EDGEMONT HIGHLANDS

PHASE I FINAL PLAT PROJECT NO. 2003-290

Located in Section 7, Township 35 North, Range 8 West, N.M.P.M.

LINE	DELTA	LENGTH	RADIUS	CHORD	CHORD LENGTH
C1	0.00	70.58	180.00	149.94	70.58
C2	0.00	38.40	180.00	74.46	38.40
C3	0.00	147.73	180.00	147.73	147.73
C4	0.00	27.08	20.00	26.70	27.08
C5	0.00	34.35	20.00	33.87	34.35
C6	0.00	18.01	155.00	177.44	18.01
C7	0.00	71.17	155.00	142.43	71.17
C8	0.00	56.55	105.00	105.00	56.55
C9	0.00	38.05	105.00	71.17	38.05
C10	0.00	34.35	105.00	63.96	34.35
C11	0.00	83.58	125.00	125.00	83.58
C12	0.00	11.44	135.00	135.00	11.44
C13	0.00	12.31	177.00	177.00	12.31
C14	0.00	23.37	20.00	23.37	23.37
C15	0.00	19.78	45.00	45.00	19.78
C16	0.00	47.44	45.00	45.00	47.44
C17	0.00	33.43	45.00	45.00	33.43
C18	0.00	40.75	45.00	45.00	40.75
C19	0.00	18.78	20.00	18.78	18.78
C20	0.00	1.29	20.00	1.29	1.29
C21	0.00	69.46	177.00	177.00	69.46
C22	0.00	14.26	177.00	177.00	14.26
C23	0.00	33.63	177.00	177.00	33.63
C24	0.00	4.92	180.00	180.00	4.92
C25	0.00	96.50	180.00	180.00	96.50
C26	0.00	29.39	180.00	180.00	29.39
C27	0.00	81.02	180.00	180.00	81.02
C28	0.00	78.27	180.00	180.00	78.27
C29	0.00	28.58	180.00	180.00	28.58
C30	0.00	15.72	120.00	120.00	15.72
C31	0.00	18.98	120.00	120.00	18.98
C32	0.00	26.91	20.00	26.91	26.91
C33	0.00	72.91	180.00	180.00	72.91
C34	0.00	37.43	20.00	37.43	37.43
C35	0.00	56.34	20.00	56.34	56.34
C36	0.00	23.49	20.00	23.49	23.49
C37	0.00	180.81	130.00	130.00	180.81
C38	0.00	104.50	130.00	130.00	104.50
C39	0.00	74.44	215.00	215.00	74.44
C40	0.00	87.58	215.00	215.00	87.58
C41	0.00	80.24	45.00	45.00	80.24
C42	0.00	4.95	45.00	4.95	4.95
C43	0.00	177.04	185.00	185.00	177.04
C44	0.00	78.99	185.00	185.00	78.99
C45	0.00	1.83	117.00	117.00	1.83
C46	0.00	183.01	117.00	117.00	183.01
C47	0.00	162.92	120.00	120.00	162.92
C48	0.00	11.44	180.00	180.00	11.44
C49	0.00	96.97	180.00	180.00	96.97
C50	0.00	28.91	20.00	28.91	28.91
C51	0.00	94.50	380.00	380.00	94.50
C52	0.00	14.06	380.00	380.00	14.06
C53	0.00	81.24	380.00	380.00	81.24
C54	0.00	11.44	380.00	380.00	11.44
C55	0.00	89.02	380.00	380.00	89.02
C56	0.00	9.27	380.00	380.00	9.27
C57	0.00	85.39	464.00	464.00	85.39
C58	0.00	4.37	464.00	464.00	4.37
C59	0.00	84.24	464.00	464.00	84.24
C60	0.00	11.44	464.00	464.00	11.44
C61	0.00	80.24	464.00	464.00	80.24
C62	0.00	12.31	464.00	464.00	12.31
C63	0.00	30.00	560.00	560.00	30.00
C64	0.00	30.00	560.00	560.00	30.00
C65	0.00	30.00	560.00	560.00	30.00
C66	0.00	30.00	560.00	560.00	30.00
C67	0.00	30.00	560.00	560.00	30.00
C68	0.00	30.00	560.00	560.00	30.00
C69	0.00	30.00	560.00	560.00	30.00
C70	0.00	30.00	560.00	560.00	30.00
C71	0.00	30.00	560.00	560.00	30.00
C72	0.00	30.00	560.00	560.00	30.00
C73	0.00	30.00	560.00	560.00	30.00
C74	0.00	30.00	560.00	560.00	30.00
C75	0.00	30.00	560.00	560.00	30.00
C76	0.00	30.00	560.00	560.00	30.00
C77	0.00	30.00	560.00	560.00	30.00
C78	0.00	30.00	560.00	560.00	30.00
C79	0.00	30.00	560.00	560.00	30.00
C80	0.00	30.00	560.00	560.00	30.00
C81	0.00	30.00	560.00	560.00	30.00
C82	0.00	30.00	560.00	560.00	30.00
C83	0.00	30.00	560.00	560.00	30.00
C84	0.00	30.00	560.00	560.00	30.00
C85	0.00	30.00	560.00	560.00	30.00
C86	0.00	30.00	560.00	560.00	30.00
C87	0.00	30.00	560.00	560.00	30.00
C88	0.00	30.00	560.00	560.00	30.00
C89	0.00	30.00	560.00	560.00	30.00
C90	0.00	30.00	560.00	560.00	30.00
C91	0.00	30.00	560.00	560.00	30.00
C92	0.00	30.00	560.00	560.00	30.00
C93	0.00	30.00	560.00	560.00	30.00
C94	0.00	30.00	560.00	560.00	30.00
C95	0.00	30.00	560.00	560.00	30.00
C96	0.00	30.00	560.00	560.00	30.00
C97	0.00	30.00	560.00	560.00	30.00
C98	0.00	30.00	560.00	560.00	30.00
C99	0.00	30.00	560.00	560.00	30.00
C100	0.00	30.00	560.00	560.00	30.00
C101	0.00	30.00	560.00	560.00	30.00
C102	0.00	30.00	560.00	560.00	30.00
C103	0.00	30.00	560.00	560.00	30.00
C104	0.00	30.00	560.00	560.00	30.00
C105	0.00	30.00	560.00	560.00	30.00
C106	0.00	30.00	560.00	560.00	30.00
C107	0.00	30.00	560.00	560.00	30.00
C108	0.00	30.00	560.00	560.00	30.00
C109	0.00	30.00	560.00	560.00	30.00
C110	0.00	30.00	560.00	560.00	30.00
C111	0.00	30.00	560.00	560.00	30.00
C112	0.00	30.00	560.00	560.00	30.00
C113	0.00	30.00	560.00	560.00	30.00
C114	0.00	30.00	560.00	560.00	30.00
C115	0.00	30.00	560.00	560.00	30.00
C116	0.00	30.00	560.00	560.00	30.00
C117	0.00	30.00	560.00	560.00	30.00
C118	0.00	30.00	560.00	560.00	30.00
C119	0.00	30.00	560.00	560.00	30.00
C120	0.00	30.00	560.00	560.00	30.00
C121	0.00	30.00	560.00	560.00	30.00
C122	0.00	30.00	560.00	560.00	30.00
C123	0.00	30.00	560.00	560.00	30.00
C124	0.00	30.00	560.00	560.00	30.00
C125	0.00	30.00	560.00	560.00	30.00
C126	0.00	30.00	560.00	560.00	30.00
C127	0.00	30.00	560.00	560.00	30.00
C128	0.00	30.00	560.00	560.00	30.00

LINE	LENGTH	BEARING
L1	35.07	N21°43'31"W
L2	12.44	N54°17'27"W
L3	46.88	N30°17'57"W
L4	34.08	S20°44'57"W
L5	108.48	S20°44'57"W
L6	4.31	N71°34'58"W
L7	20.58	N71°34'58"W
L8	32.34	S74°57'31"W
L9	2.44	S74°57'31"W
L10	19.87	N42°58'32"W
L11	34.08	S42°58'32"W
L12	42.74	S20°44'57"W
L13	80.39	S20°44'57"W
L14	54.40	N74°56'00"W
L15	49.77	N74°56'00"W
L16	34.08	S71°21'08"W
L17	28.98	S71°21'08"W
L18	58.08	S51°14'48"W
L19	7.98	S64°17'18"W
L20	48.09	N75°25'48"W
L21	25.90	S71°21'08"W
L22	35.77	N21°43'31"W
L23	91.31	N61°58'59"W
L24	30.00	N28°34'32"W
L25	30.00	N28°34'32"W
L26	21.32	N28°34'32"W
L27	10.16	S74°56'00"W
L28	94.11	S74°56'00"W
L29	5.48	N71°21'08"W
L30	28.90	N71°21'08"W
L31	28.90	N71°21'08"W
L32	38.19	S50°16'32"W
L33	42.41	N52°16'32"W
L34	102.33	S59°41'19"W
L35	74.84	S59°41'19"W
L36	48.39	S47°10'24"W
L37	108.43	S62°32'26"W
L38	48.39	S27°10'24"W
L39	74.31	S59°41'19"W
L40	103.46	S59°41'19"W
L41	91.67	S57°10'37"W
L42	37.47	S59°35'45"W
L43	48.91	S20°56'24"W
L44	36.31	N58°21'13"W
L45	82.71	N58°21'13"W
L46	42.67	N15°52'01"W
L47	4.78	S85°58'01"W
L48	15.41	S85°58'01"W
L49	15.41	S85°58'01"W
L50	4.78	S85°58'01"W
L51	114.14	N15°52'01"W
L52	8.21	S85°58'01"W
L53	43.13	S85°58'01"W
L54	20.20	S18°02'40"W
L55	20.20	N58°10'40"W
L56	46.36	N30°07'40"W
L57	5.20	N30°07'40"W
L58	109.86	N62°22'26"W
L59	17.07	S20°16'28"W
L60	146.45	S20°16'28"W
L61	226.58	S51°47'46"W
L62	91.87	N61°10'37"W
L63	26.90	N49°32'45"W
L64	7.17	N49°32'45"W
L65	41.74	N22°30'27"W
L66	25.12	S56°21'13"W
L67	93.90	S56°21'13"W
L68	37.62	S20°17'40"W
L69	86.05	S17°48'00"W
L70	21.35	S43°31'37"W
L71	289.44	S52°15'22"W
L72	146.58	N17°10'02"W
L73	265.41	N26°14'33"W
L74	311.16	N47°20'48"W
L75	78.23	N40°08'00"W
L76	21.63	S52°15'22"W
L77	11.57	S52°15'22"W
L78	20.39	S84°32'00"W
L79	174.23	S04°39'00"W

LAND USE TABLE

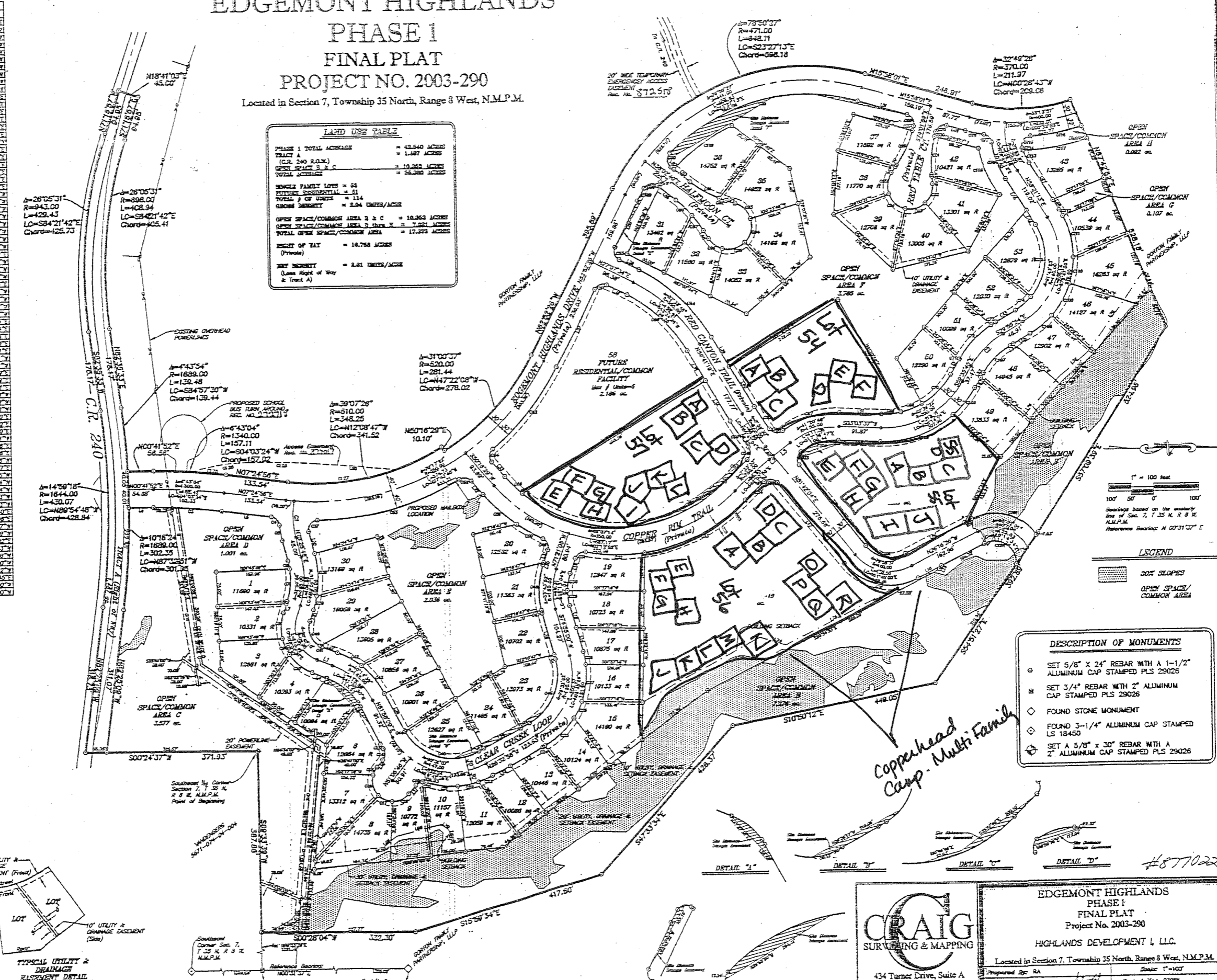
PHASE I TOTAL ACREAGE = 43.540 ACRES
 TRACT A (C.R. 240 R.O.R.) = 1.487 ACRES
 OPEN SPACE/COMMON AREA B & C = 10.363 ACRES
 TOTAL ACRES = 55.290 ACRES

SINGLE FAMILY LOTS = 58
 FUTURE RESIDENTIAL = 51
 TOTAL # OF UNITS = 114
 GROSS DENSITY = 2.04 UNITS/ACRE

OPEN SPACE/COMMON AREA B & C = 10.363 ACRES
 OPEN SPACE/COMMON AREA D & E = 7.822 ACRES
 TOTAL OPEN SPACE/COMMON AREA = 17.375 ACRES

RIGHT OF WAY = 14.758 ACRES
 (Private)

NET DENSITY = 2.41 UNITS/ACRE
 (Open Right of Way & Tract A)



DESCRIPTION OF MONUMENTS

- SET 5/8" X 24" REBAR WITH A 1-1/2" ALUMINUM CAP STAMPED PLS 29026
- SET 3/4" REBAR WITH 2" ALUMINUM CAP STAMPED PLS 29026
- ◇ FOUND STONE MONUMENT
- ◇ FOUND 3-1/4" ALUMINUM CAP STAMPED LS 18450
- ⊗ SET A 5/8" X 30" REBAR WITH A 2" ALUMINUM CAP STAMPED PLS 29026

CRAIG SURVEYING & MAPPING

434 Turner Drive, Suite A
 Durango, Colorado 81303
 (970) 259-2837
 (970) 259-4322 (Fax)

EDGEMONT HIGHLANDS PHASE I FINAL PLAT
 Project No. 2003-290
 HIGHLANDS DEVELOPMENT I, LLC

Located in Section 7, Township 35 North, Range 8 West, N.M.P.M.

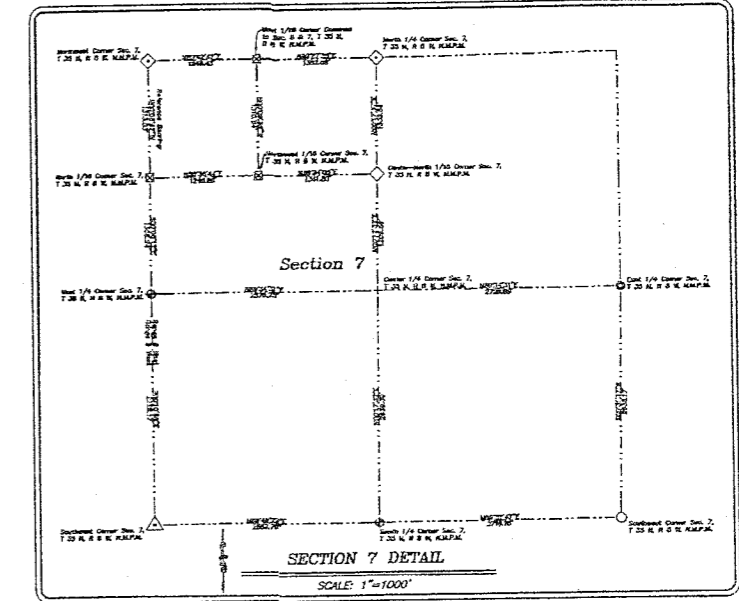
Prepared By: RA Date: 1/1/04
 Checked By: AAC Date: 1/1/04
 Date: 10/27/03 11:21 AM

Scale: 1"=100'
 Project No.: 0298
 Sheet 2 of 2

EDGEMONT HIGHLANDS, PHASE 2A

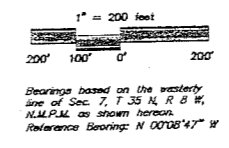
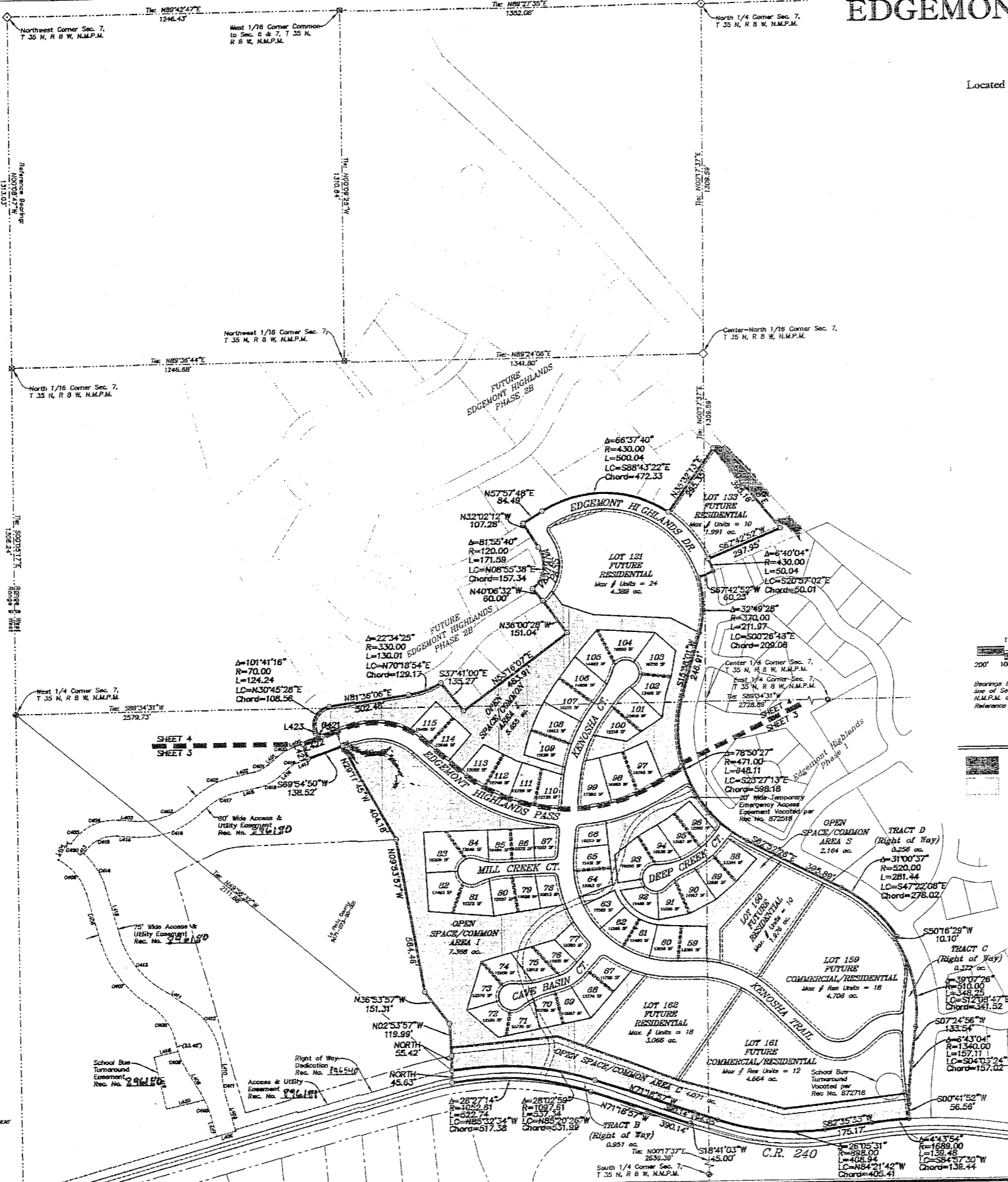
FINAL PLAT PROJECT NO. 2004-221

Located in Section 7, Township 35 North, Range 8 West, N.M.P.M.



LINE	LENGTH	BEARING
L400	40.28	N89°54'50"E
L401	43.03	N49°14'42"E
L402	80.90	N77°44'46"E
L403	63.85	S84°20'52"E
L404	75.00	N77°36'09"E
L405	182.48	S15°44'27"E
L406	106.41	S10°24'00"E
L407	80.00	N12°44'00"W
L408	73.00	N27°20'00"E
L409	130.55	N12°44'00"W
L410	33.05	N01°46'17"W
L411	66.90	S56°05'46"E
L412	182.88	S15°44'27"E
L413	12.22	N38°58'08"E
L414	43.86	S82°20'52"E
L415	80.90	N77°44'46"E
L416	43.03	N49°14'42"E
L417	40.28	N89°54'50"E
L418	93.04	N77°04'22"E
L419	203.00	N12°44'00"W
L420	145.18	N77°04'22"E
L421	80.00	N50°51'10"W
L422	80.00	N69°54'50"E
L423	8.46	N40°35'10"W

CURVE	DELTA	LENGTH	RADIUS	CHORD	LC
C400	21°39'08"	88.02	180.00	S89°35'16"W	67.52
C401	29°02'04"	81.05	120.00	N82°30'14"E	60.40
C402	31°37'40"	182.16	330.00	S81°35'57"W	179.86
C403	48°52'01"	330.28	270.00	N70°33'07"E	223.56
C404	51°18'54"	208.88	185.00	S83°31'47"W	158.88
C405	37°41'10"	15.40	287.50	N60°31'45"W	15.40
C406	48°18'24"	171.80	212.50	N38°54'09"E	167.16
C407	41°52'55"	319.80	437.50	S36°40'54"E	312.73
C408	44°47'07"	174.08	222.71	N33°28'29"E	169.58
C409	19°29'37"	85.28	280.00	S20°59'11"E	84.90
C410	14°48'00"	84.71	370.00	N23°14'00"W	84.45
C411	17°57'43"	90.16	370.00	S9°45'09"E	89.94
C412	58°11'34"	282.53	270.00	N11°42'04"W	279.40
C413	45°53'24"	290.34	362.50	S18°41'08"E	282.64
C414	31°21'03"	157.31	287.50	N31°24'58"W	155.38
C415	57°44'01"	138.03	155.00	S85°47'08"W	130.35
C416	48°52'01"	281.45	330.00	N70°33'07"E	273.00
C417	31°72'40"	148.04	270.00	S81°35'57"W	147.16
C418	28°18'04"	91.58	180.00	N62°50'14"E	90.60
C419	21°39'08"	45.35	120.00	S89°35'16"W	45.08
C420	37°41'10"	15.40	287.50	N60°31'45"W	15.40
C421	90°10'10"	31.42	20.00	N55°15'10"W	28.28



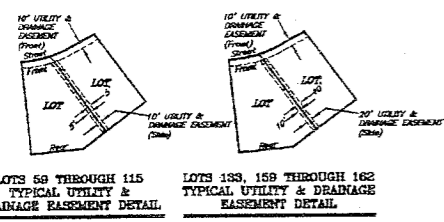
Bearings based on the westerly line of Sec. 7, T. 35 N. R. 8 W. N.M.P.M. as shown hereon. Reference Bearing: N 00°08'47" W

LEGEND
 50% SLOPES
 OPEN SPACE/COMMON AREA

- DESCRIPTION OF MONUMENTS**
- SET 5/8" X 24" REBAR WITH A 1-1/2" ALUMINUM CAP STAMPED PLS 29026
 - ◇ SET A 3/4"x30" REBAR W/ 2" ALUMINUM CAP STAMPED PLS 29026
 - ◇ FOUND A 1" PIPE REPLACED WITH A 2"x30" PIPE W/ 3-1/4" ALUMINUM CAP STAMPED LS 29026
 - ◇ SET A 2"x30" PIPE W/ 3-1/4" ALUMINUM CAP STAMPED LS 29026
 - ◇ FOUND A 1" PIPE REPLACED WITH A 3/4"x30" PIPE W/ 2" ALUMINUM CAP STAMPED LS 29026
 - FOUND STONE MONUMENT
 - ◇ FOUND 5/8" REBAR WITH 1-1/2" ALUMINUM CAP STAMPED PLS 29026
 - △ FOUND A 3-1/4" ALUMINUM CAP STAMPED LS 29770
 - FOUND A 3-1/4" ALUMINUM CAP STAMPED LS 18450
 - + POSITION FOR CORNER - MONUMENT NOT FOUND OR SET

LAND USE TABLE

PHASE 2A TOTAL ACREAGE	= 61.958 Ac.
TRACT B	= 0.951 Ac.
(C.R. 240 R.O.W.)	
TRACT C & D	= 0.828 Ac.
(Edgemont Highlands Dr. R.O.W.)	
OPEN SPACE C	= 4.071 Ac.
TOTAL ACREAGE	= 07.618 Ac.
SINGLE FAMILY LOTS	= 97
FUTURE RESIDENTIAL	= 32
FUTURE COMMERCIAL/RESIDENTIAL	= 30
TOTAL # OF UNITS	= 149
GROSS DENSITY	= 2.21 Units/Acre
OPEN SPACE/COMMON AREA C	= 4.071 Ac.
OPEN SPACE/COMMON AREA I, J, S	= 15.187 Ac.
TOTAL OPEN SPACE/COMMON AREA	= 19.258 Ac.
RIGHT OF WAY	= 8.625 Ac.
NET DENSITY	= 2.60 Units/Acre
(Less Right of Way & Tract B, C & D)	



CRAIG
SURVEYING & MAPPING

72 SUTTLE STREET, Suite 1
Durango, Colorado 81303
(970) 259-2887
(970) 259-4322 (Fax)

EDGEMONT HIGHLANDS, PHASE 2A
FINAL PLAT
Project No. 2004-221
OVERALL/BOUNDARY MAP

HIGHLANDS DEVELOPMENT II, LLC.
Located in Section 7, Township 35 North, Range 8 West, N.M.P.M.

Prepared By: RA
Checked By: AAC
Date: 10/27/04

Scale: 1"=200'
Project No: 04020
Sheet 2 of 4

Recd 896542

EDGEMONT HIGHLANDS, PHASE 2B FINAL PLAT

PROJECT NO. 2004-0222
Located in Section 7, Township 35 North, Range 8 West, N.M.P.M.

122 - 645 EH Dr
123 - 661 EH Dr
124 - 681 EH Dr

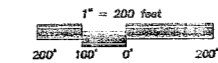
These enter from
EH Drive

DESCRIPTION OF MONUMENTS	
○	SET 5/8" X 24" REBAR WITH A 1-1/2" ALUMINUM CAP STAMPED PLS 29026
◇	FOUND A 3/4"x30" REBAR W/ 2" ALUMINUM CAP STAMPED PLS 29026
◇	FOUND A 2"x30" PIPE W/ 3-1/4" ALUMINUM CAP STAMPED LS 29026
●	FOUND STONE MONUMENT
○	FOUND 5/8" REBAR WITH 1-1/2" ALUMINUM CAP STAMPED PLS 29026
x	POSITION FOR CORNER - MONUMENT NOT FOUND OR SET

LAND USE TABLE	
PHASE 2B TOTAL ACRES	= 77.48 Ac.
OPEN SPACE B	= 6.183 Ac.
TOTAL ACRES	= 83.663 Ac.
SINGLE FAMILY LOTS	= 41
TOTAL # OF UNITS	= 41
GRASS DENSITY	= 0.168 Units/Acre
OPEN SPACE/Common Area B	= 6.183 Ac.
OPEN SPACE/Common Area M Area R	= 28.819 Ac.
TOTAL OPEN SPACE/Common Area	= 35.002 Ac.
RIGHT OF WAY	= 0.538 Ac.
NET DENSITY	= 0.356 Units/Acre (Less Right of Way)

LINE TABLE		
LINE	LENGTH	BEARING
L422	80.00	S69°34'50"W
L423	8.46	S20°05'10"E

CURVE TABLE					
CURVE	DELTA	LENGTH	RADIUS	CHORD	LC
C421	90°00'00"	31.42	20.00	S69°34'50"E	20.28



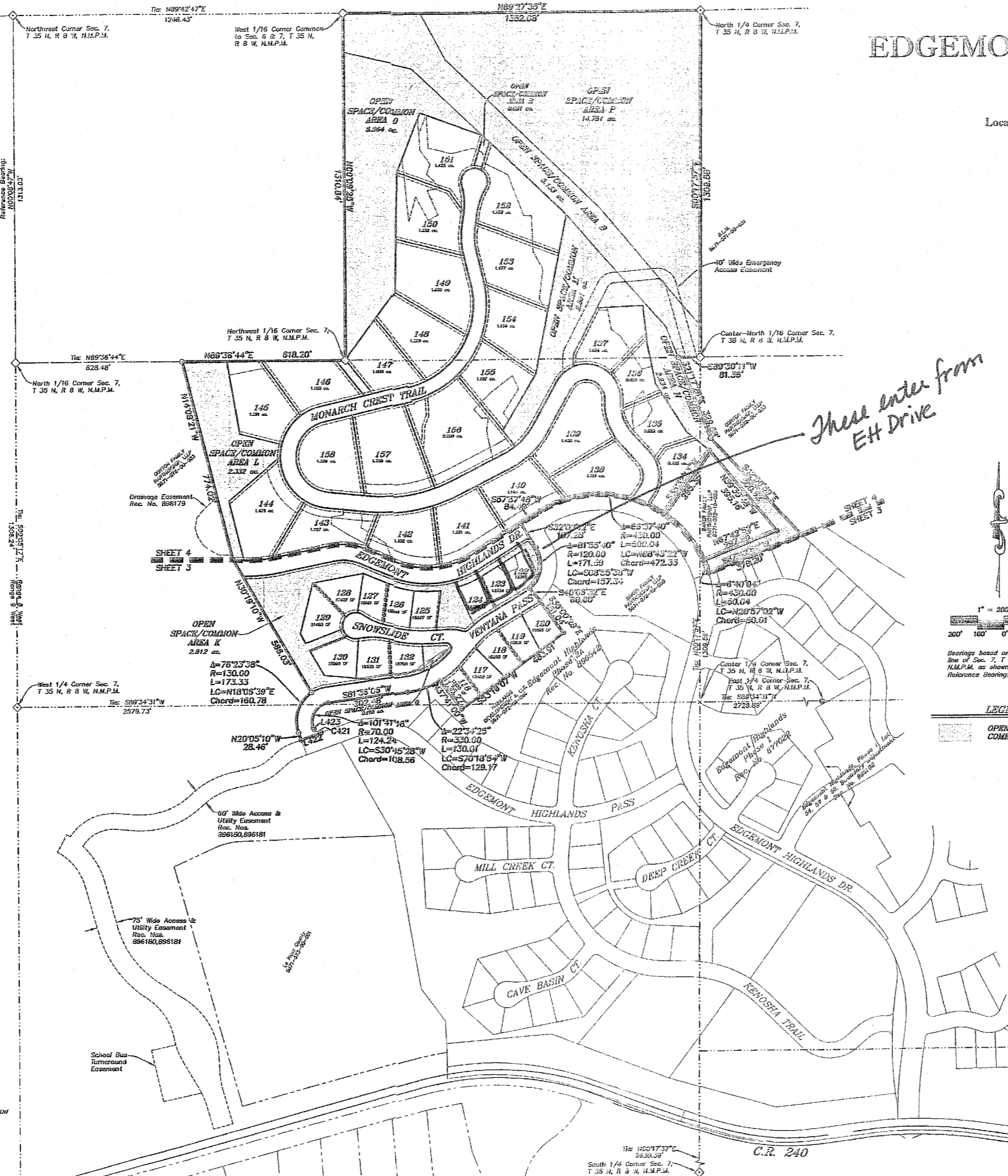
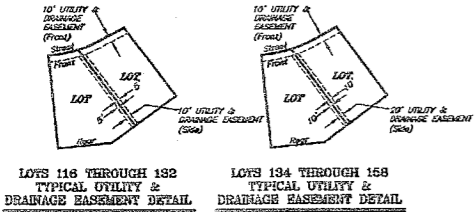
LEGEND
 OPEN SPACE/COMMON AREA



906548

CRAIG
SURVEYING & MAPPING
72 SUTTLE STREET, Suite I
Durango, Colorado 81303
(970) 259-2887
(970) 259-4322 (Fax)

EDGEMONT HIGHLANDS, PHASE 2B
FINAL PLAT
Project No. 2004-0222
OVERALL/BOUNDARY MAP
HIGHLANDS DEVELOPMENT II, L.L.C.
Located in Section 7, Township 35 North, Range 8 West, N.M.P.M.
Prepared by: RA Scale: 1"=200'
Checked by: AAC Project No.: 04020
Date: 4/6/05 Sheet 2 of 4

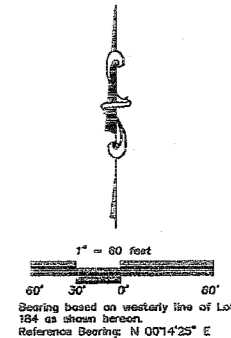
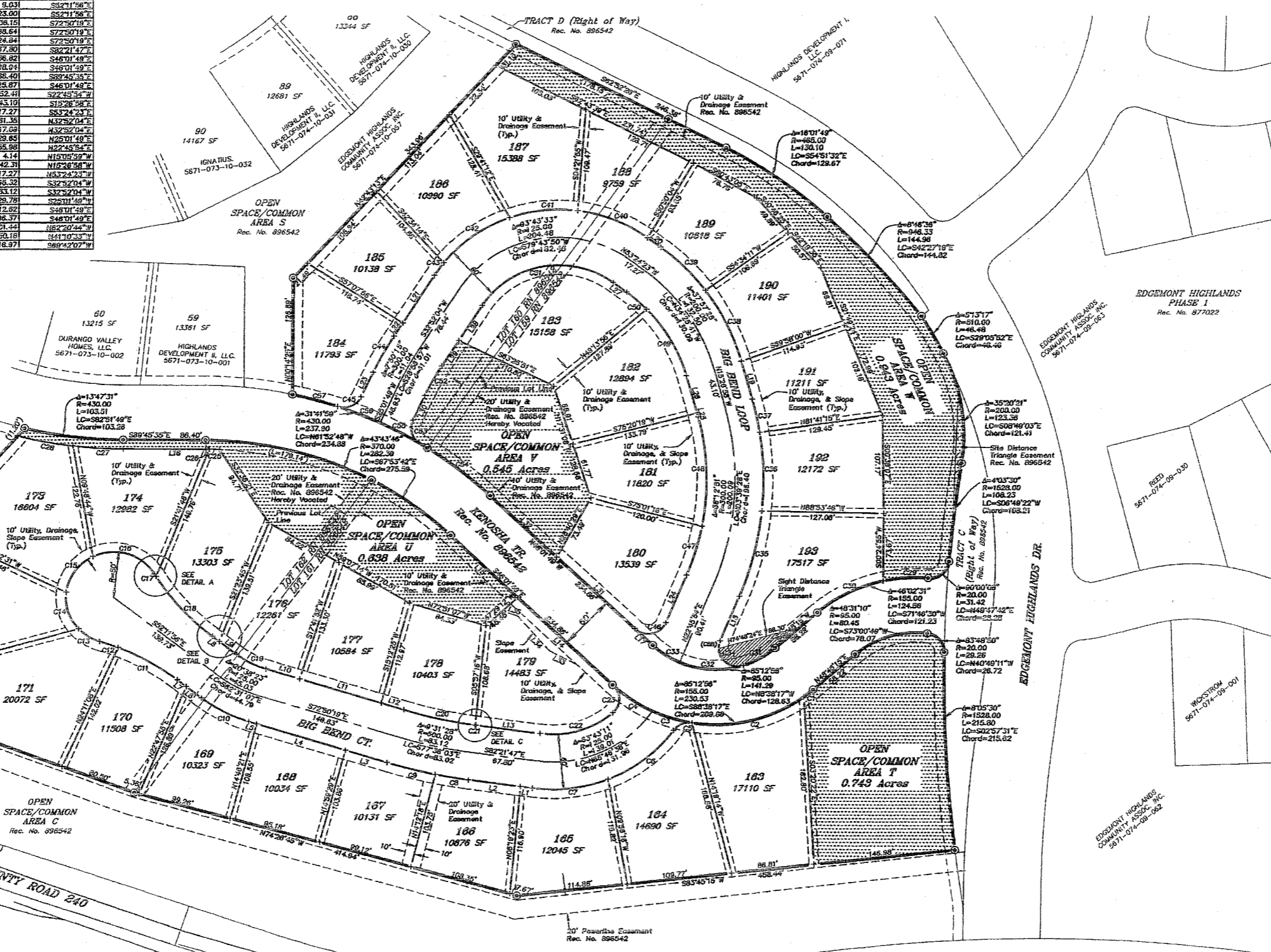


EDGEMONT HIGHLANDS, PHASE 2C

FINAL PLAT Project No. 2005-0261

Located in Section 7, Township 35 North, Range 8 West, N.M.P.M.

CURVE TABLE					LINE TABLE		
CURV	DELTA	LENGTH	RADIUS	CHORD	LINE	LENGTH	BEARING
C1	43°22'44"	12.51	155.00	N51°03'57"E	L1	12.53	N82°21'47"W
C2	45°51'39"	124.06	155.00	N78°18'28"E	L2	55.27	N82°21'47"W
C3	16°09'04"	43.51	155.00	S72°43'14"E	L3	48.13	N72°30'18"W
C4	18°15'01"	49.37	155.00	S55°31'11"E	L4	95.65	N72°30'18"W
C5	63°28'07"	22.14	20.00	S87°31'10"W	L5	6.63	N72°30'18"W
C6	32°42'44"	87.48	155.00	N81°17'59"E	L6	30.19	N52°11'56"W
C7	29°30'22"	78.82	155.00	N82°51'02"E	L7	11.31	N52°11'56"W
C8	35°01'19"	35.49	530.00	S80°28'41"E	L8	9.03	S82°11'56"E
C9	54°11'16"	52.61	530.00	S75°40'57"E	L9	28.00	S82°11'56"E
C10	20°32'23"	55.84	155.00	S82°31'07"E	L10	38.15	S72°30'18"E
C11	18°24'44"	71.58	250.00	N80°24'03"W	L11	85.64	S72°30'18"E
C12	42°38'08"	20.32	250.00	N70°51'14"W	L12	24.84	S72°30'18"E
C13	30°16'58"	28.42	50.00	S88°05'58"E	L13	87.80	S72°30'18"E
C14	49°38'40"	43.29	50.00	S18°01'30"W	L14	136.82	S48°01'49"E
C15	57°18'44"	30.01	50.00	S32°18'22"E	L15	98.04	S89°01'59"E
C16	84°22'42"	74.07	50.00	N73°35'55"W	L16	85.40	S89°45'35"E
C17	04°46'58"	3.41	250.00	S31°33'01"E	L17	28.87	S48°01'49"E
C18	20°12'27"	88.39	250.00	S42°24'25"E	L18	32.41	S22°45'34"E
C19	20°32'23"	34.22	95.00	S83°31'07"E	L19	43.10	S18°28'58"E
C20	82°40'00"	77.11	470.00	S77°32'19"E	L20	17.27	S83°24'23"E
C21	00°27'28"	1.02	470.00	S82°18'03"E	L21	81.35	N32°52'04"E
C22	48°50'16"	80.98	95.00	N73°15'05"E	L22	17.09	N32°52'04"E
C23	58°08'31"	34.33	20.00	S00°18'48"E	L23	28.65	N85°01'06"E
C24	01°14'20"	10.31	350.00	S89°17'42"E	L24	95.98	S22°45'34"E
C25	00°37'27"	3.92	350.00	S89°28'51"E	L25	4.14	N15°00'59"W
C26	65°10'08"	52.62	440.00	S88°20'01"E	L26	42.31	N15°26'58"W
C27	73°36'11"	38.39	440.00	S79°08'22"E	L27	17.27	N53°24'23"E
C28	17°15'48"	48.70	155.00	S86°09'31"W	L28	46.32	S32°52'04"E
C29	28°48'43"	77.85	155.00	S83°08'38"W	L29	33.12	S32°52'04"E
C30	22°21'44"	38.31	95.00	N81°17'59"E	L30	26.78	S23°01'17"E
C31	41°17'48"	88.47	95.00	S81°07'48"E	L31	112.62	S48°01'49"E
C32	20°27'06"	33.91	95.00	S56°15'22"E	L32	86.37	S48°01'49"E
C33	130°32'38"	45.87	20.00	S43°20'44"E	L33	31.44	N82°20'44"W
C34	16°46'18"	86.80	330.00	N11°29'45"W	L34	59.18	N41°10'39"W
C35	142°38'46"	86.27	330.00	N01°29'45"W	L35	18.97	S89°42'07"E
C36	87°25'07"	37.23	330.00	N12°13'07"E			
C37	21°29'02"	86.24	230.00	N28°11'29"W			
C38	16°28'23"	86.13	230.00	N48°01'27"W			
C39	28°23'15"	79.50	155.00	M88°06'01"W			
C40	26°26'25"	71.53	155.00	S83°38'09"W			
C41	31°43'48"	89.84	155.00	S84°34'03"W			
C42	22°21'44"	38.31	95.00	S83°31'07"E			
C43	75°01'15"	45.14	330.00	S28°55'57"W			
C44	83°41'59"	29.21	20.00	N88°52'38"E			
C45	111°21'27"	38.82	20.00	N78°22'02"E			
C46	11°31'18"	55.87	270.00	N16°50'15"E			
C47	25°28'22"	120.88	250.00	N01°54'57"E			
C48	22°21'44"	38.31	95.00	N81°17'59"E			
C49	42°40'00"	28.09	170.00	N48°30'21"W			
C50	83°43'33"	155.40	95.00	S72°43'50"W			
C51	73°01'15"	38.33	270.00	S28°56'57"W			
C52	83°32'20"	29.18	20.00	S16°44'38"E			
C53	12°28'12"	83.71	430.00	N82°16'25"W			
C54	67°23'07"	47.85	430.00	N81°21'66"W			
C55	87°25'07"	47.90	430.00	N80°05'04"W			
C56	87°25'07"	48.44	430.00	N74°30'10"W			
C57	87°25'07"	48.44	430.00	N74°30'10"W			
C58	34°22'33"	8.51	20.00	S10°34'37"E			



LEGEND
 OPEN SPACE/
COMMON AREA

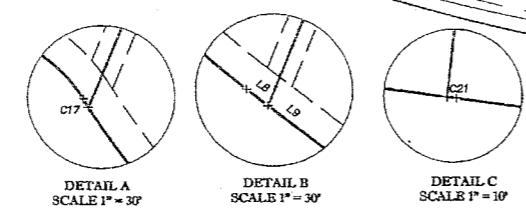
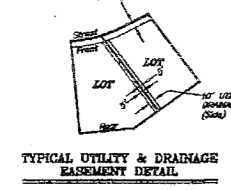
LAND USE TABLE

PHASE 2C TOTAL ACREAGE	= 14.618 Ac.
SINGLE FAMILY LOTS	= 31
CROSS DENSITY	= 2.16 Units/Ac.
OPEN SPACE / TRACT X	= 2.969 Ac.
RIGHT OF WAY	= 2.182 Ac.
NET DENSITY	= 2.53 Units/Ac.

(Less Right of Way)

DESCRIPTION OF MONUMENTS

- FOUND 5/8" REBAR WITH 1-1/2" ALUMINUM CAP STAMPED PLS 29026
- POSITION FOR CORNER - MONUMENT NOT FOUND OR SET (MONUMENT SHALL BE SET W/ A 5/8"x24" REBAR W/ 1-1/2" ALUM. CAP STAMPED PLS 29026 WITHIN 1 YEAR OF RECORDATION OF THIS PLAT)



CRAIG
SURVEYING & MAPPING
 72 SUTTLE STREET, Suite I
 Durango, Colorado 81303
 (970) 259-2887
 (970) 259-4322 (Fax)

EDGEMONT HIGHLANDS, PHASE 2C
 Final Plat
 Project No. 2005-0261
 PLAT SHEET #1
 HIGHLANDS DEVELOPMENT II, LLC.
 Located in Section 7, Township 35 North, Range 8 West, N.M.P.M.
 Prepared By: RA
 Checked By: AAC
 Date: 1/03/06
 Scale: 1"=60'
 Project No.: 05027
 Sheet 2 of 2

RECEPTION # 925871

EDGEMONT HIGHLANDS, PHASE 4

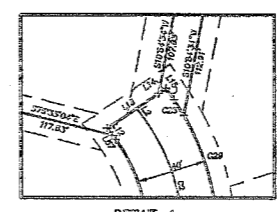
Final Plat
Project No. 2006-0340

Located in Section 7, Township 35 North, Range 8 West, N.M.P.M. &
Section 12, Township 35 North, Range 9 West, N.M.P.M.

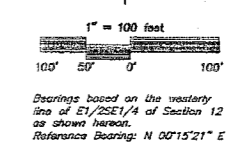


DESCRIPTION OF MONUMENTS

- SET 5/8" X 24" REBAR WITH A 1-1/2" ALUMINUM CAP STAMPED PLS 29026
- ◇ FOUND 3/4" REBAR WITH 2" ALUMINUM CAP STAMPED PLS 29770
- ◆ FOUND 3/4" REBAR WITH 2" ALUMINUM CAP STAMPED PLS 22574
- + POSITION FOR CORNER - MONUMENT NOT FOUND OR SET. THE DEVELOPER SHALL BE RESPONSIBLE TO RETAIN THE SERVICES OF A COLORADO REGISTERED LAND SURVEYOR TO SET THE INTERIOR LOT CORNERS IN ORDER TO COMPLY WITH LA PLATA COUNTY CODE SEC. 102-55(1) AND PRODUCE A MONUMENTED LAND SURVEY PLAT TO BE DEPOSITED WITH THE LA PLATA COUNTY SURVEYOR AS SET FORTH IN THE DEVELOPMENT IMPROVEMENT AGREEMENT FILED UNDER RECEPTION NO. 920215



LINE	LINE TABLE			CURVE TABLE				
	LENGTH	BEARING	CURVE	DELTA	LENGTH	RADIUS	CHORD	LC
L1	10.03	N53°43'28"E	C1	370'22"	5.26	95.00	N52°08'17"E	5.26
L2	8.00	N35°07'19"W	C2	48'28"58"	89.32	115.00	N10°22'52"W	86.26
L3	88.77	N78°31'48"E	C3	428'00"	38.68	300.00	S43°22'09"E	38.68
L4	37.30	S24°03'58"W	C4	162°14"	35.21	125.00	S43°22'09"E	35.09
L5	9.85	S82°25'48"W	C5	16°18'21"	36.66	125.00	N45°19'18"E	36.53
L6	7.02	S84°36'48"W	C6	3°53'16"	28.10	370.00	N17°40'37"W	25.10
L7	37.37	N71°02'23"W	C7	10°46'45"	68.81	370.00	N28°14'37"E	68.51
L8	3.85	N71°02'23"W	C8	2°02'36"	9.99	280.00	S29°24'40"E	9.99
L9	10.08	N14°21'36"E	C9	4°32'45"	8.07	225.00	N78°19'07"E	8.07
L10	10.08	S83°33'22"E	C10	27°17'19"	103.00	225.00	S89°13'02"E	103.00
L11	23.35	N14°21'36"E	C11	8°13'51"	14.00	10.00	S84°10'53"W	13.88
L12	5.05	N35°07'19"W	C12	12°20'38"	33.39	155.00	N30°14'17"E	33.33
L13	35.00	N54°22'41"E	C13	27°34'43"	74.11	155.00	N50°08'27"E	73.41
L14	5.00	N54°22'41"E	C14	10°24'39"	28.39	155.00	N69°13'09"E	28.35
L15	8.00	S35°07'19"E	C15	2°48'08"	25.45	530.00	N75°20'32"E	25.45
L16	26.08	S14°21'36"E	C16	4°32'45"	8.07	225.00	N78°19'07"E	8.07
L17	26.08	S81°33'09"E	C17	15°13'08"	87.65	330.00	S87°46'30"E	87.29
L18	58.10	S89°05'09"E	C18	9°07'43"	52.58	330.00	S75°36'14"E	52.82
L19	10.52	S28°05'09"E	C19	23°59'58"	77.91	166.00	S89°02'24"E	77.34
L20	68.75	S58°29'38"E	C20	22°03'55"	71.53	188.00	S38°00'27"E	71.19
L21	33.55	S59°05'58"E	C21	21°36'58"	70.17	188.00	S14°10'01"E	69.78
L22	28.44	N37°24'14"E	C22	3°28'12"	100.17	188.00	N32°14'14"E	98.97
L23	14.26	N37°24'14"E	C23	16°54'08"	79.65	270.00	N19°02'53"E	79.26
L24	25.41	N53°43'28"E	C24	8°16'44"	39.01	270.00	N08°27'27"E	38.89
L25	50.41	N77°04'22"E	C25	5°28'56"	40.77	430.00	S05°02'03"W	40.75
L26	42.63	N77°04'22"E	C26	6°36'35"	49.61	430.00	S11°03'19"W	49.58
L27	3.83	N12°25'38"W	C27	48°28'58"	82.54	85.00	N10°22'52"W	79.52
L28	38.74	S27°25'14"E	C28	4°39'17"	13.91	135.00	N32°14'14"E	13.89
L29	82.19	S38°48'21"E	C29	24°33'08"	57.85	135.00	N18°14'56"E	57.41
L30	12.23	S54°07'14"E	C30	20°23'39"	48.05	135.00	N04°19'47"E	47.80
L31	97.34	S54°07'14"E	C31	88°00'46"	18.76	10.00	S33°38'46"E	14.86
L32	32.71	S54°07'14"E	C32	4°26'00"	36.37	470.00	S83°32'09"E	36.36
L33	76.01	S37°35'14"E	C33	26°44'53"	84.03	180.00	N72°42'42"W	83.27
L34	28.44	S37°35'14"E	C34	27°00'18"	84.94	180.00	N57°54'58"W	83.84
L35	22.75	S83°43'28"E	C35	3°58'40"	17.36	270.00	S88°27'56"E	17.26
L36	26.95	S83°43'28"E	C36	8°17'42"	41.45	270.00	S64°42'07"E	41.41
L37	6.31	N10°54'23"W	C37	73°18'48"	12.80	10.00	N74°14'38"E	11.94
L38	37.34	S10°54'23"W	C38	16°08'14"	43.66	155.00	S45°39'21"E	43.51
L39	51.02	N71°02'23"W	C39	37°08'47"	105.57	155.00	S84°17'02"E	105.11
L40	24.45	S71°02'23"W	C40	27°00'18"	72.71	172.00	S10°22'52"W	72.00
L41	14.88	S89°10'09"E	C41	0°38'14"	1.48	330.00	N34°14'28"W	1.48
L42	33.73	S28°10'09"E	C42	14°44'40"	84.92	330.00	N46°44'54"W	84.89
L43	68.75	S58°29'38"E	C43	31°59'43"	94.59	170.00	S18°10'33"E	93.37
L44	29.57	S60°05'58"E	C44	47°10'13"	139.86	170.00	S01°20'35"W	136.04
L45	23.99	S37°35'14"E	C45	12°39'33"	37.58	170.00	S11°15'27"W	37.48
L46	83.78	S44°07'14"E	C46	16°18'11"	65.01	135.00	S43°17'14"E	64.60
L47	28.74	S82°35'05"W	C47	8°43'42"	25.61	155.00	N49°21'37"E	23.58
L48	42.24	N77°24'54"W	C48	29°38'35"	109.94	212.00	N50°53'44"W	108.72
L49	42.24	N69°13'09"E	C49	44°27'38"	23.42	280.00	S17°18'10"E	23.42
L50	28.74	N62°38'08"E	C50	8°10'07"	73.99	10.00	N15°11'08"W	12.88
L51	8.48	S84°07'14"E	C51	35°21'27"	58.53	85.00	N41°14'41"E	57.70
L52	36.28	S38°48'21"E	C52	14°57'14"	64.57	95.00	N68°14'22"E	34.60
L53	50.50	S38°48'21"E	C53	10°18'50"	84.60	470.00	N72°27'23"E	84.49
L54	44.12	S18°46'21"E	C54	23°42'55"	111.73	270.00	S83°11'54"E	110.93
L55	95.44	S18°46'21"E	C55	48°52'33"	107.57	128.00	S46°33'36"E	104.42
L56	30.02	S27°31'32"W	C56	49°54'47"	108.03	128.00	S02°42'24"W	105.36
L57	2.95	N35°07'19"W	C57	5°09'44"	28.00	330.00	N42°39'44"E	28.99
L58	128.03	S38°22'59"W	C58	15°54'00"	88.56	330.00	N14°40'50"E	88.38
L59	55.13	S25°31'39"W	C59	4°34'45"	26.37	330.00	N04°16'29"E	26.37
L60	30.80	S22°54'26"W	C60	11°48'34"	78.26	370.00	S08°13'22"W	76.13
L61	30.28	S02°23'16"E	C61	84°13'11"	74.70	10.00	S86°14'18"W	13.41
L62	54.79	S45°13'37"W	C62	4°26'00"	41.01	530.00	S43°22'09"E	41.00
L63	84.65	S04°28'43"W	C63	21°12'14"	44.41	120.00	N73°28'02"E	44.16
L64	16.48	S43°11'55"W	C64	0°23'19"	17.57	120.00	N69°01'15"W	17.55
L65	50.32	S13°49'48"E	C65	2°48'36"	15.99	330.00	S87°52'53"E	15.99
L66	24.71	S20°39'58"W	C66	9°59'47"	55.62	330.00	S81°11'05"E	55.55
L67	81.52	S02°18'39"W	C67	108°41'12"	18.82	10.00	N15°45'22"W	18.04
L68	82.98	S07°43'37"E	C68	20°14'06"	89.58	230.00	S27°33'10"W	80.15
L69	107.34	S04°28'43"W	C69	16°24'28"	31.43	230.00	S13°24'37"W	31.61
L70	78.81	S10°18'39"W	C70	19°03'28"	76.50	230.00	S00°08'55"W	76.15
L71	38.25	S04°13'44"W	C71	19°00'22"	76.30	230.00	S18°55'19"E	75.95
L72	85.84	S05°47'05"W	C72	19°32'23"	62.38	230.00	S36°11'41"E	62.19
L73	48.98	S09°27'41"W	C73	10°09'22"	40.77	230.00	S49°02'34"E	40.72
L74	47.38	S20°39'14"E	C74	91°18'01"	15.93	10.00	N08°28'14"E	14.30
L75	46.22	S18°06'22"W	C75	45°24'29"	73.25	100.00	N69°24'26"E	72.18
L76	34.56	S31°14'04"E	C76	5°43'53"	12.18	125.00	N82°22'32"E	12.17
L77	42.88	S85°42'14"W	C77	14°25'07"	31.46	125.00	S84°32'28"E	31.37
L78	83.14	S78°11'11"E	C78	58°45'32"	51.28	50.00	S73°12'20"W	49.08
L79	30.22	S02°35'08"W	C79	72°11'15"	67.50	50.00	S05°08'52"E	62.49
L80	20.52	N87°32'34"E	C80	38°19'42"	31.72	50.00	S83°09'32"E	49.44
L81	39.56	S42°52'12"E	C81	24°37'31"	21.49	50.00	N43°33'04"E	21.31
			C82	5°31'36"	12.80	125.00	S89°13'04"E	12.78
			C83	9°12'16"	20.81	125.00	S73°13'10"W	20.78
			C84	4°38'47"	10.03	125.00	S80°17'12"W	10.03
			C85	19°44'00"	81.66	180.00	N72°43'05"E	51.41
			C86	26°14'28"	84.70	150.00	N49°13'22"E	68.70
			C87	89°10'07"	15.89	10.00	S11°42'22"W	14.05
			C88	19°20'53"	72.33	270.00	N48°28'48"W	72.11
			C89	17°19'49"	68.06	225.00	S47°26'15"E	67.80
			C90	55°01'14"	120.11	125.00	N55°13'28"E	116.64
			C91	18°21'16"	79.92	280.00	N28°33'58"E	79.85
			C92	25°13'58"	123.31	280.00	N47°41'33"E	122.32
			C93	16°13'21"	78.45	280.00	N68°20'13"E	78.21
			C94	0°58'24"	3.00	270.00	S71°13'05"E	3.00



#950578



LEGEND

- OPEN SPACE/COMMON AREA
- 30% SLOPES

CRAIG SURVEYING & MAPPING
72 SUTTLE STREET, Suite I
Durango, Colorado 81303
(970) 259-2887
(970) 259-4322 (Fax)

EDGEMONT HIGHLANDS, PHASE 4
Final Plat
Project No. 2006-0340
HIGHLANDS DEVELOPMENT IV, LLC.
Located in Section 7, Township 35 North, Range 8 West, N.M.P.M. &
Section 12, Township 35 North, Range 9 West, N.M.P.M.

Prepared By: RA
Checked By: AAG
Date: 1/15/07

Scale: 1"=100'
Project No: 06028
Sheet 2 of 2